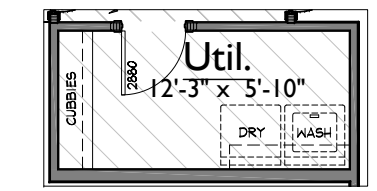


**1 LOWER LEVEL FLOOR PLAN**  
 1/8" = 1'-0"



**2 OPTIONAL CUBBIES**  
 1/4" = 1'-0"

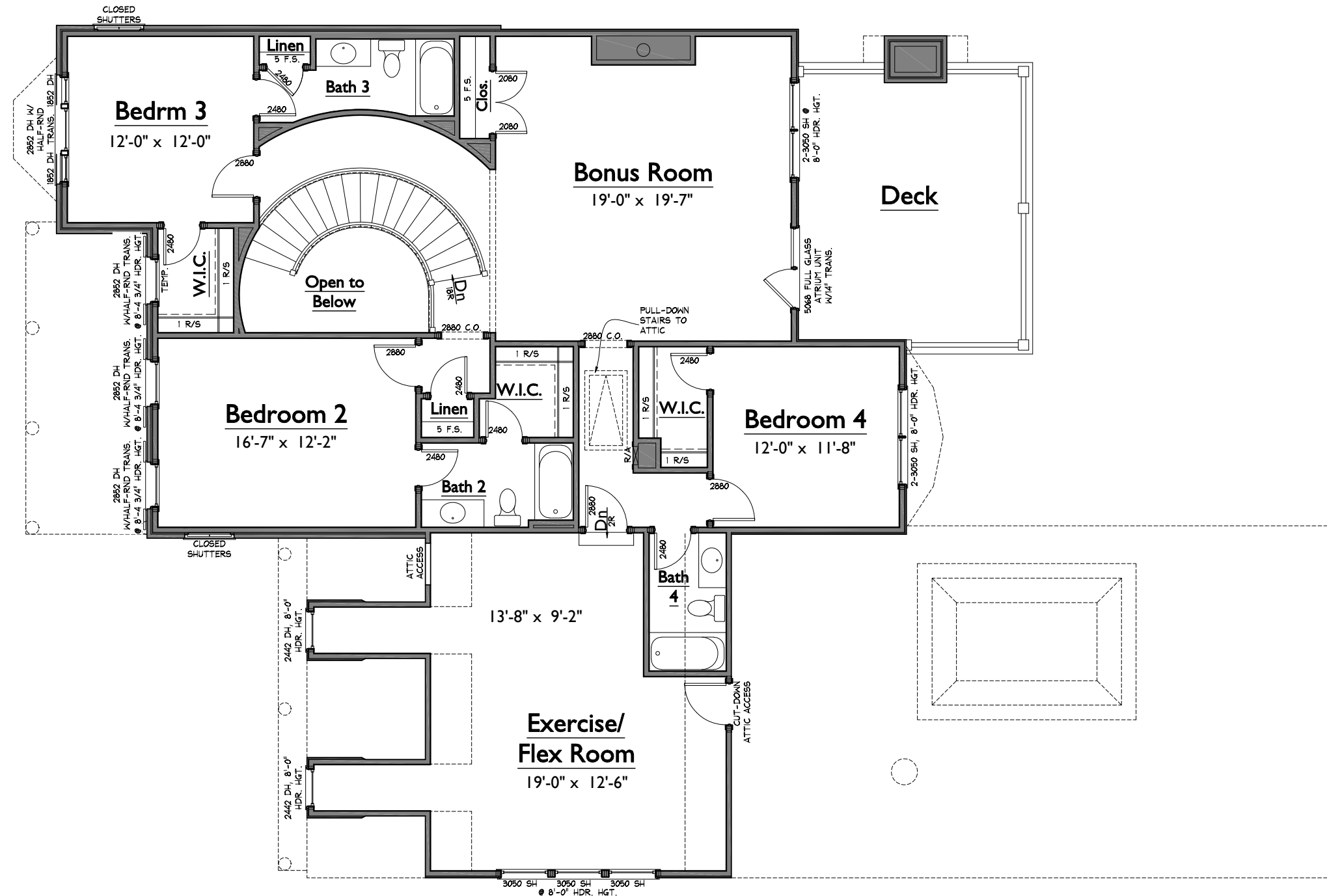
AREAS			
HEATED LIVING	BASEMENT	0	4331
	FIRST FLOOR	2321	
	SECOND FLOOR	2010	
	TOTAL HEATED LIVING	4331	
UNFIN. LIVING	UNFIN. BASEMENT	0	4331
	UNFIN. FIRST FLOOR	0	
	UNFIN. SECOND FLOOR	0	
	TOTAL UNFIN. LIVING	0	
MECH./STORAGE	UNFIN. STORAGE	0	5467
	GARAGE	704	
	COVERED ENTRY	158	
	COVERED PORCHES	274	
TOTAL OTHER		1136	
LAST CHECKED: 08.09.2017 EH			

ISSUE DATE:	
1	09 AUG 2017: EH
2	28 AUG 2017: EH
3	15 SEPT 2017: KJK

**A1**  
 LOWER LEVEL FLOOR PLAN

S:\Projects\Westhaven\Sec 35\WH1277\_julIWH65\FPD.dwg kate.king 09/15/17 5:01 P

NOTE: ROOMS ON THIS PLAN ARE ANNOTATED WITH SIZES FOR DEPICTIVE PURPOSES ONLY AND MAY VARY DUE TO A NUMBER OF CONDITIONS. ROOM SIZES ARE MEASURED TO FRAMING WHERE WALLS ARE PRESENT. WHERE NO WALLS ARE PRESENT BETWEEN SPACES, ROOMS AS SIZED MAY OVERLAP SLIGHTLY OR NOT TOUCH.



**1** UPPER LEVEL FLOOR PLAN  
1/8" = 1'-0"

NOTE: ROOMS ON THIS PLAN ARE ANNOTATED WITH SIZES FOR DEPICTIVE PURPOSES ONLY AND MAY VARY DUE TO A NUMBER OF CONDITIONS. ROOM SIZES ARE MEASURED TO FRAMING WHERE WALLS ARE PRESENT. WHERE NO WALLS ARE PRESENT BETWEEN SPACES, ROOMS AS SIZED MAY OVERLAP SLIGHTLY OR NOT TOUCH.

**WESTHAVEN LOT 1277**  
806 STONEWATER BLVD.  
JULIANNE 65  
WH1277\_juliWH65  
LAST CHECKED: 09.14.2017 KJK

ISSUE DATE:	
1	09 AUG 2017: EH
2	28 AUG 2017: EH
3	15 SEPT 2017: KJK

**A2**  
UPPER LEVEL FLOOR PLAN

S:\Projects\Westhaven\Sec 33\WH1277\_juliWH65\F02.dwg kate.king 09/15/17 - 5:01 P



2 RIGHT ELEVATION  
1/8" = 1'-0"



1 FRONT ELEVATION  
1/8" = 1'-0"

WESTHAVEN LOT 1277  
806 STONEWATER BLVD.  
JULIANNE 65

LAST CHECKED: 09.15.2017 KJK

WH1277\_juliWH65

ISSUE DATE:	
1	09 AUG 2017: EH
2	28 AUG 2017: EH
3	15 SEPT 2017: KJK

**A4**  
ELEVATIONS



2 REAR ELEVATION  
1/8" = 1'-0"



1 LEFT ELEVATION  
1/8" = 1'-0"

WESTHAVEN LOT 1277  
806 STONEWATER BLVD.  
JULIANNE 65

LAST CHECKED: 09.15.2017 KJK

WH1277\_juliWH65

ISSUE DATE:	
1	09 AUG 2017: EH
2	28 AUG 2017: EH
3	15 SEPT 2017: KJK

**A5**  
ELEVATIONS