

**LOCKWOOD GLEN LOT 154**  
 LG154

**LOWER LEVEL FLOOR PLAN**

ISSUE DATE:  
04 MAY 2017

REVISIONS:

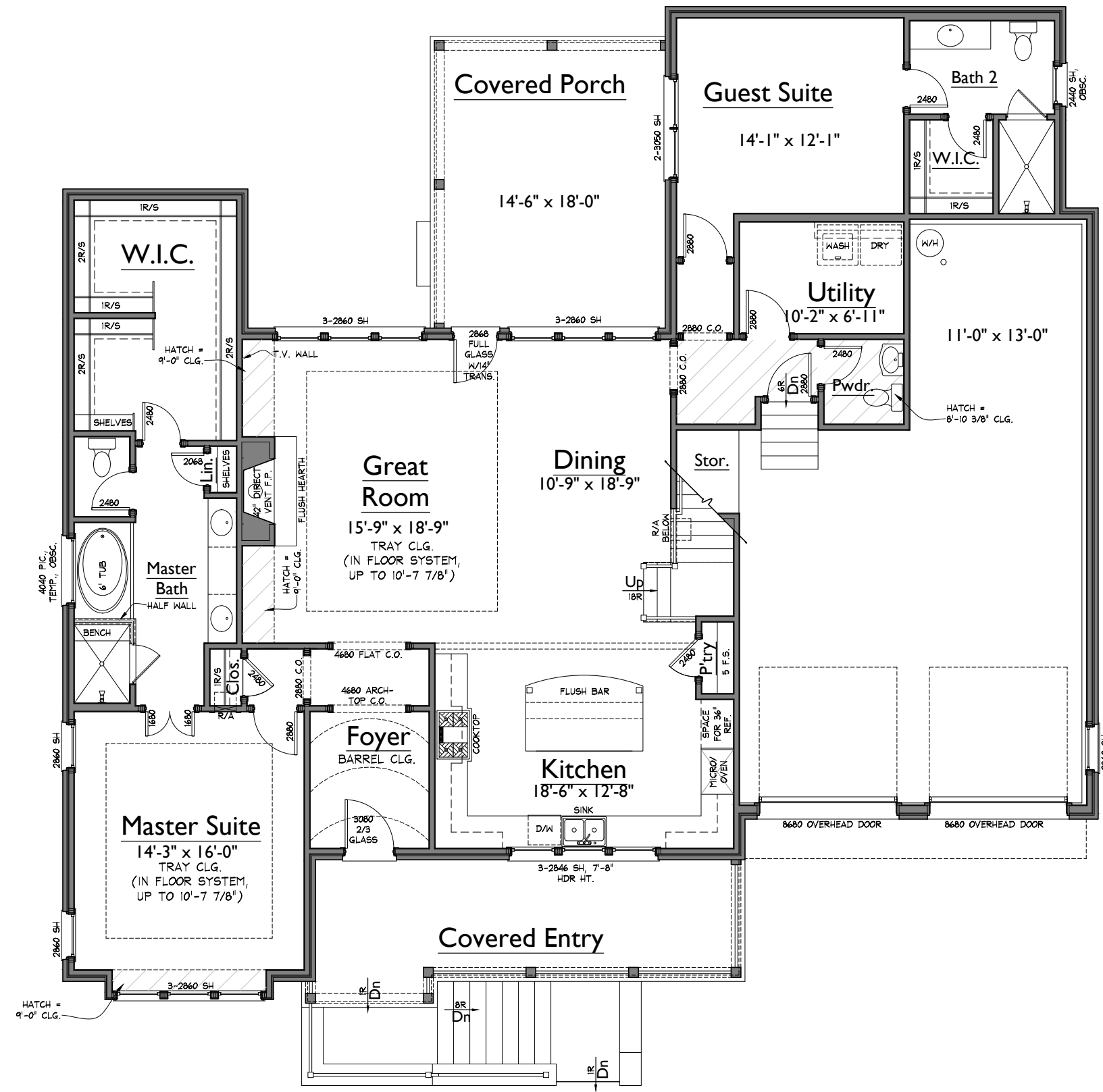
1	28 APR 2017: REV1
2	04 MAY 2017: REV2
3	22 JUN 2017: REV3
4	27 JUN 2017: REV3

**A1**  
 LOWER LEVEL FLOOR PLAN

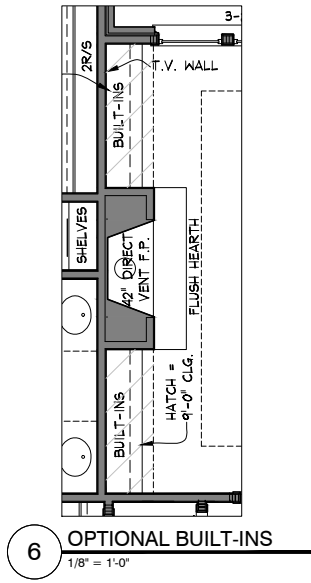
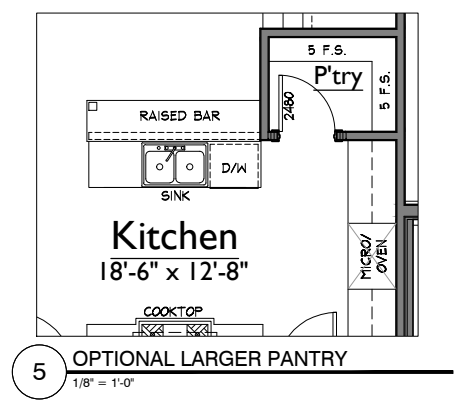
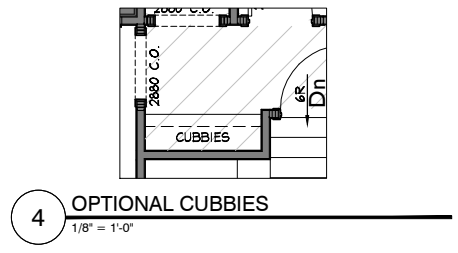
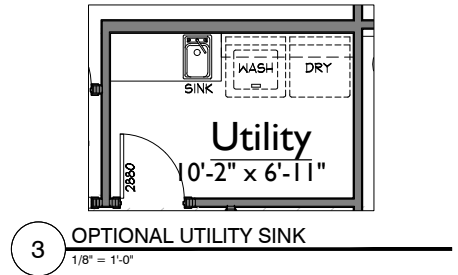
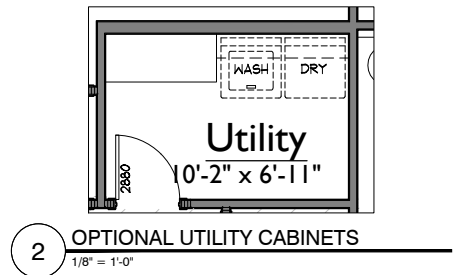
**AREAS**

HEATED LIVING	AREA	TOTAL
BASEMENT	0	4019
FIRST FLOOR	2062	
SECOND FLOOR	1957	
TOTAL HEATED LIVING	4019	
UNFIN. LIVING	AREA	TOTAL
UNFIN. BASEMENT	0	4298
UNFIN. FIRST FLOOR	0	
UNFIN. SECOND FLOOR	279	
TOTAL UNFIN. LIVING	279	
MECH./STORAGE	AREA	TOTAL
UNFIN. STORAGE	0	5480
GARAGE	709	
COVERED ENTRY	212	
COVERED PORCHES	261	
TOTAL OTHER	1182	

B LAST CHECKED: 05.04.2017 DB



**1 LOWER LEVEL FLOOR PLAN**  
 1/8" = 1'-0"



S:\Projects\Lockwood Glen\Sec 5\LG154\_V-FP01.dwg dustin.baker 06/27/17 - 5:02 P

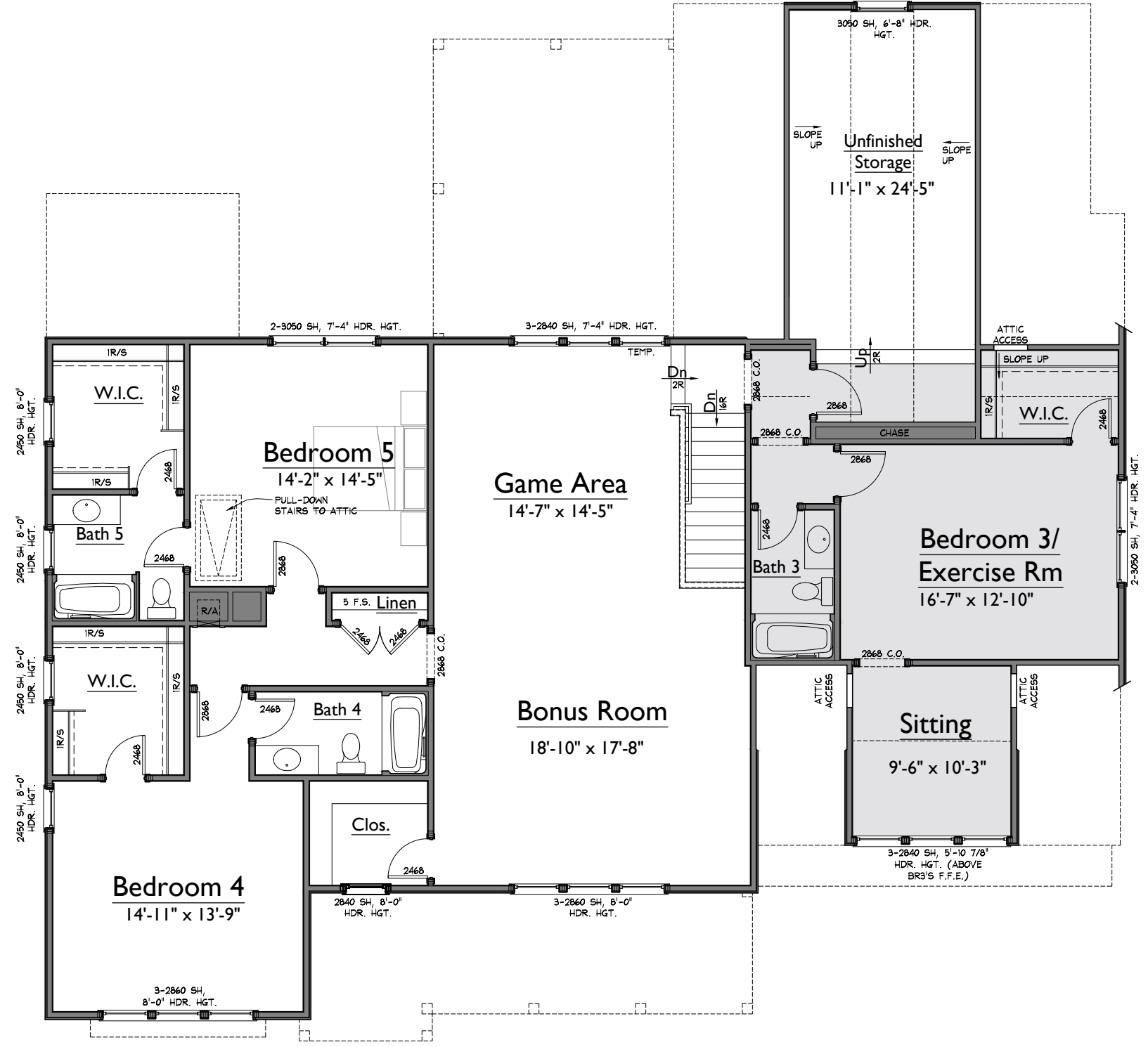
NOTE: ROOMS ON THIS PLAN ARE ANNOTATED WITH SIZES FOR DEPICTIVE PURPOSES ONLY AND MAY VARY DUE TO A NUMBER OF CONDITIONS. ROOM SIZES ARE MEASURED TO FRAMING WHERE WALLS ARE PRESENT. WHERE NO WALLS ARE PRESENT BETWEEN SPACES, ROOMS AS SIZED MAY OVERLAP SLIGHTLY OR NOT TOUCH.

**LOCKWOOD GLEN LOT 154**  
 LG154

**UPPER LEVEL FLOOR PLAN**  
 LAST CHECKED: 05.04.2017  
 DB

ISSUE DATE: 04 MAY 2017	
REVISIONS:	
1	28 APR 2017: REV1
2	04 MAY 2017: REV2
3	22 JUN 2017: REV3
4	27 JUN 2017: REV3

**A2**  
 UPPER LEVEL FLOOR PLAN



**1** UPPER LEVEL FLOOR PLAN  
 1/8" = 1'-0"

S:\Projects\Lockwood Glen\Sec 5\LG154\_V-FR02.dwg dustin.baker 06/27/17 - 5:02 P

NOTE: ROOMS ON THIS PLAN ARE ANNOTATED WITH SIZES FOR DEPICTIVE PURPOSES ONLY AND MAY VARY DUE TO A NUMBER OF CONDITIONS. ROOM SIZES ARE MEASURED TO FRAMING WHERE WALLS ARE PRESENT. WHERE NO WALLS ARE PRESENT BETWEEN SPACES, ROOMS AS SIZED MAY OVERLAP SLIGHTLY OR NOT TOUCH.



LG154\_EL00

1 FRONT ELEVATION  
1/8" = 1'-0"



2 RIGHT ELEVATION  
1/8" = 1'-0"

LOCKWOOD GLEN LOT 154  
LG154\_

ELEVATIONS

LAST CHECKED:  
06.22.2017  
DB

ISSUE DATE:  
04 MAY 2017

REVISIONS:	
1	28 APR 2017: REV1
2	04 MAY 2017: REV2
3	22 JUN 2017: REV3
4	27 JUN 2017: REV3

**A4**

ELEVATIONS



**1** LEFT ELEVATION  
1/8" = 1'-0"



**2** REAR ELEVATION  
1/8" = 1'-0"